

Steeline **BONVILLE CLADDING** **WALL PANEL**

Bonville is a modern sleek looking cladding with secret concealed fixings, square edges and 15mm expressed groove providing straight lines used in vertical or horizontal orientations.

Being designed for use in wall and ceiling applications, it can be used in a variety of situations. Bonville cladding can be attached directly to wall frames or with the use of battens over other structures.

A breathable vapour barrier is required between the structure and wall cladding in residential applications.

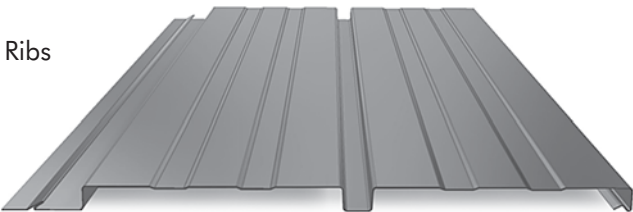
CLASSIC EURO PANEL RANGE WALL CLADDING

Profiles

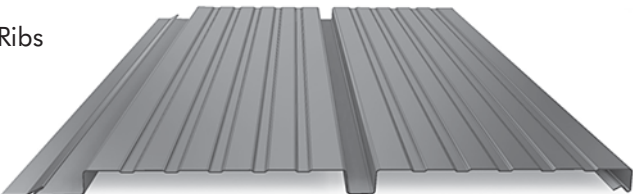
Flat



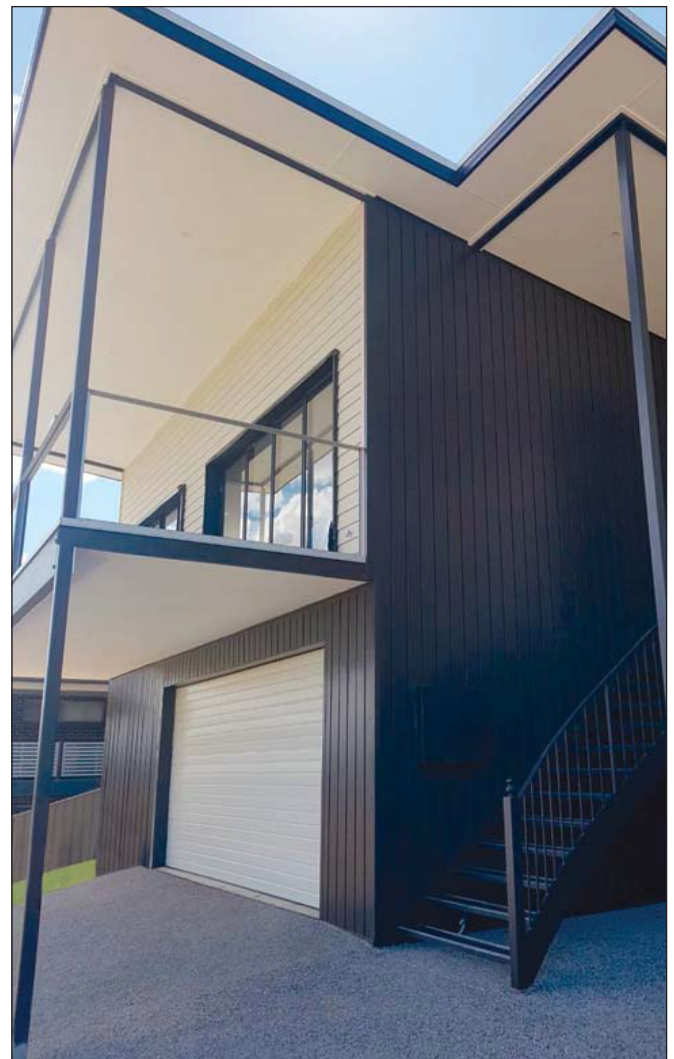
2 Ribs



5 Ribs

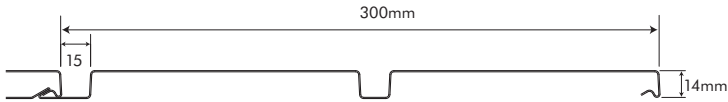


Joint Detail



Steeline BONVILLE CLADDING WALL PANEL

CLASSIC EURO PANEL RANGE WALL CLADDING



Profiles

There are 3 profiles:
Flat, 2 Ribs and 5 Ribs.

Usage

Walls & under eaves only.

Preparation

The battens must be rigid
and in one plane at
1500mm centres max.

Thickness

.55mm Colorbond®

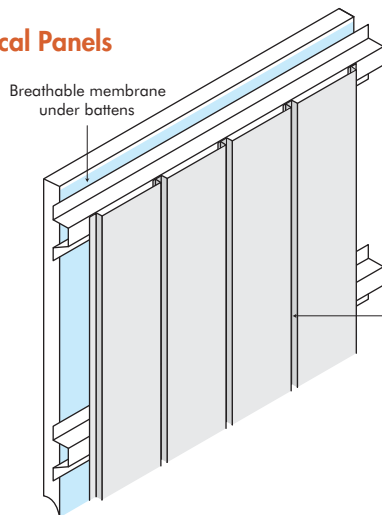
Availability

- Colorbond®
- Colorbond® Ultra
- Colorbond® Metallic
- Colorbond® Matt
- Zinalume AZ150

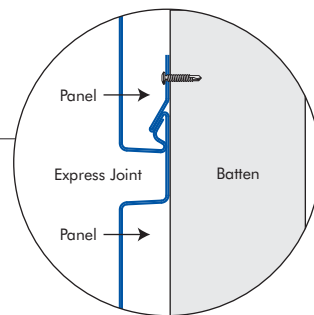
Standard Specifications

| | |
|-----------------------|--|
| Panel Depth and Cover | - 14mm x 300mm |
| Express Joint Width | - 15mm |
| Panel Length | - 0.5m - 8.0m |
| Minimum Pitch | - Wall & ceiling applications only |
| Batten Span | - Maximum 1500mm Centres |
| Screws | - Timber -TY17 12 x 25 Hex Type - Steel -Teks M10 x 16 Hex Type |

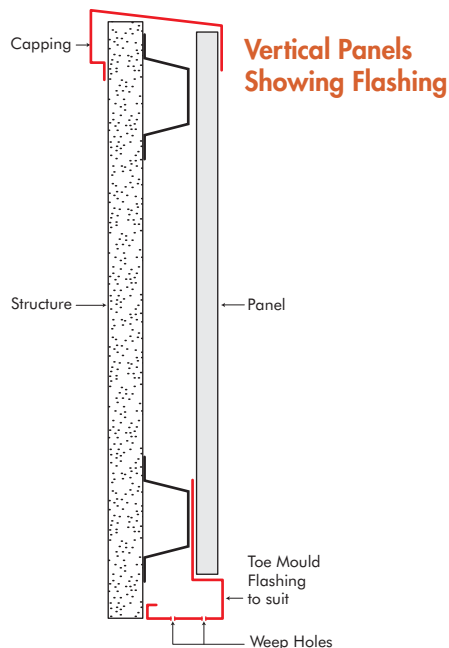
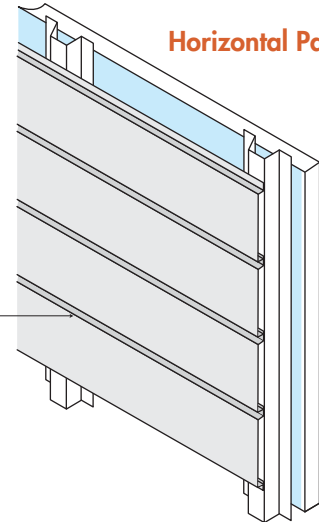
Vertical Panels



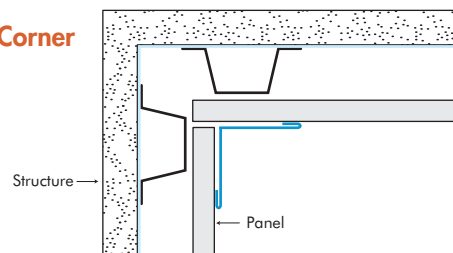
Express Joint



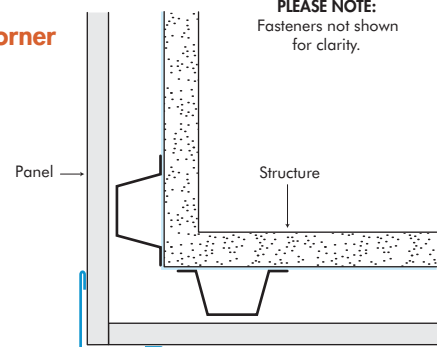
Horizontal Panels



Internal Corner



External Corner



PLEASE NOTE:
Fasteners not shown
for clarity.

OIL CANNING

Oil Canning is a characteristic that is inherent in thin gauge metals. Internal stresses, expansion and contraction can cause a wavy surface on flat panels. The Architect and Builder need to be aware of the aesthetic effect that oil canning can have on the project. Recommendations to reduce the effect of oil canning, please ask **Backyard Pods**.